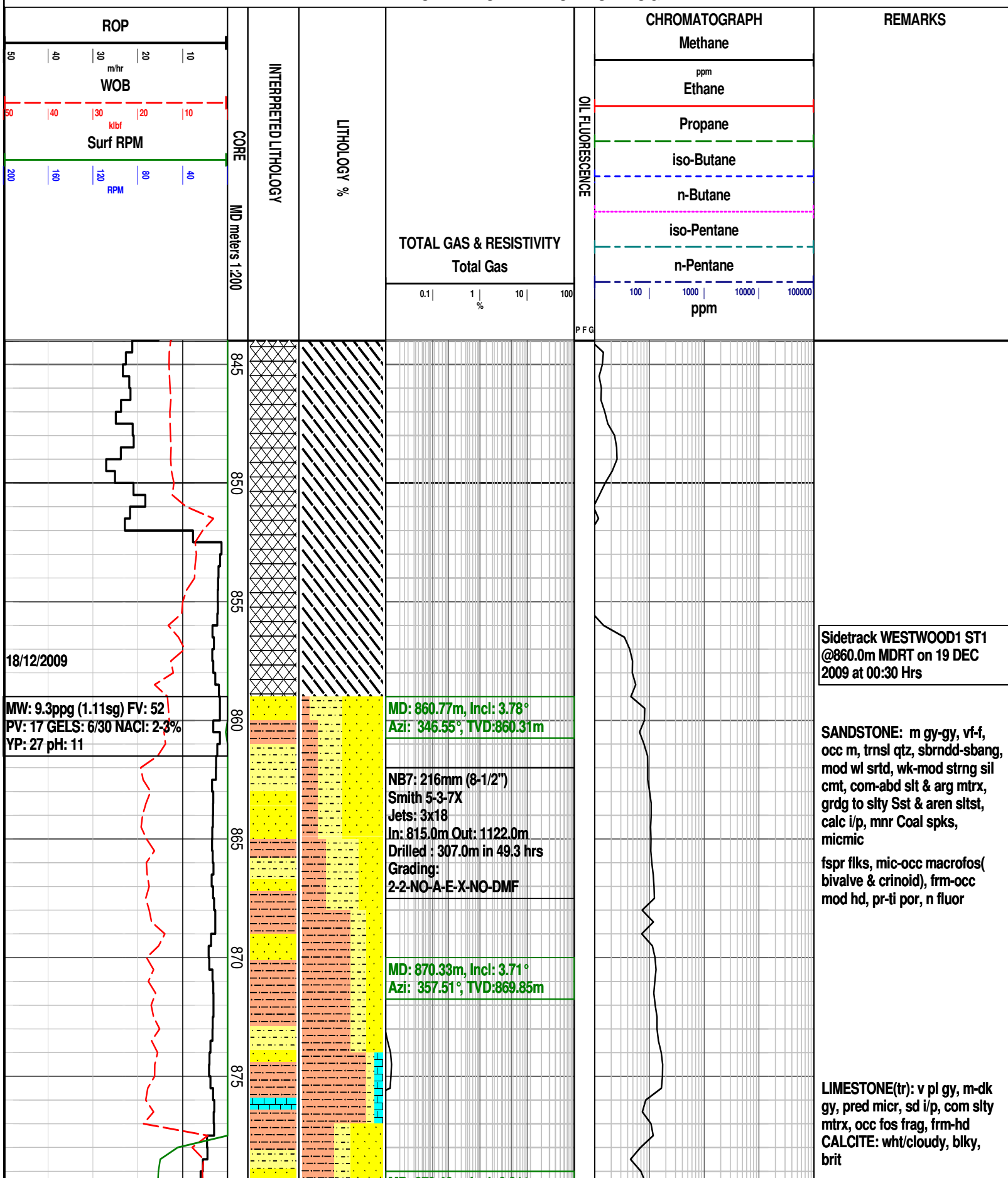


FORMATION EVALUATION LOG



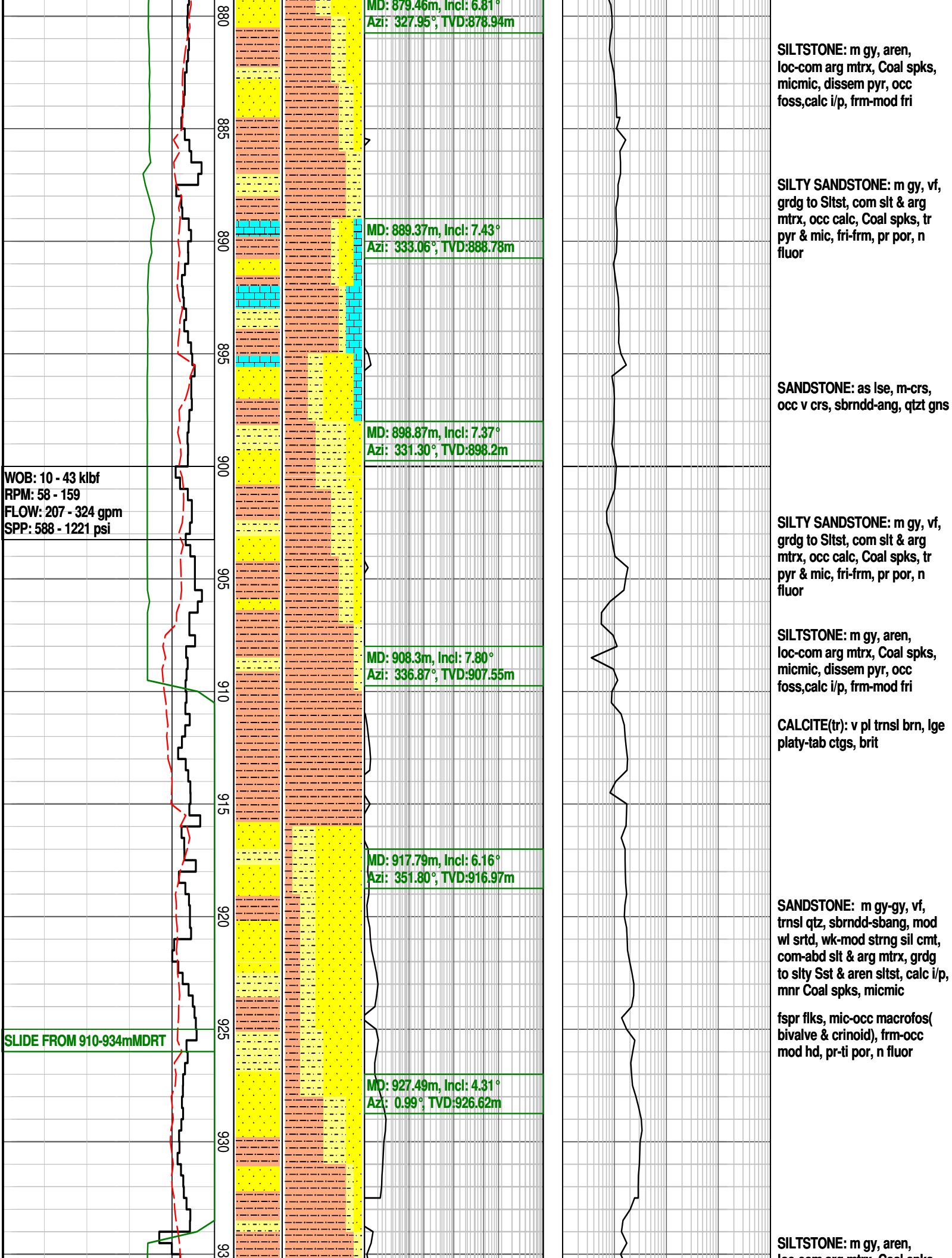
18/12/2009

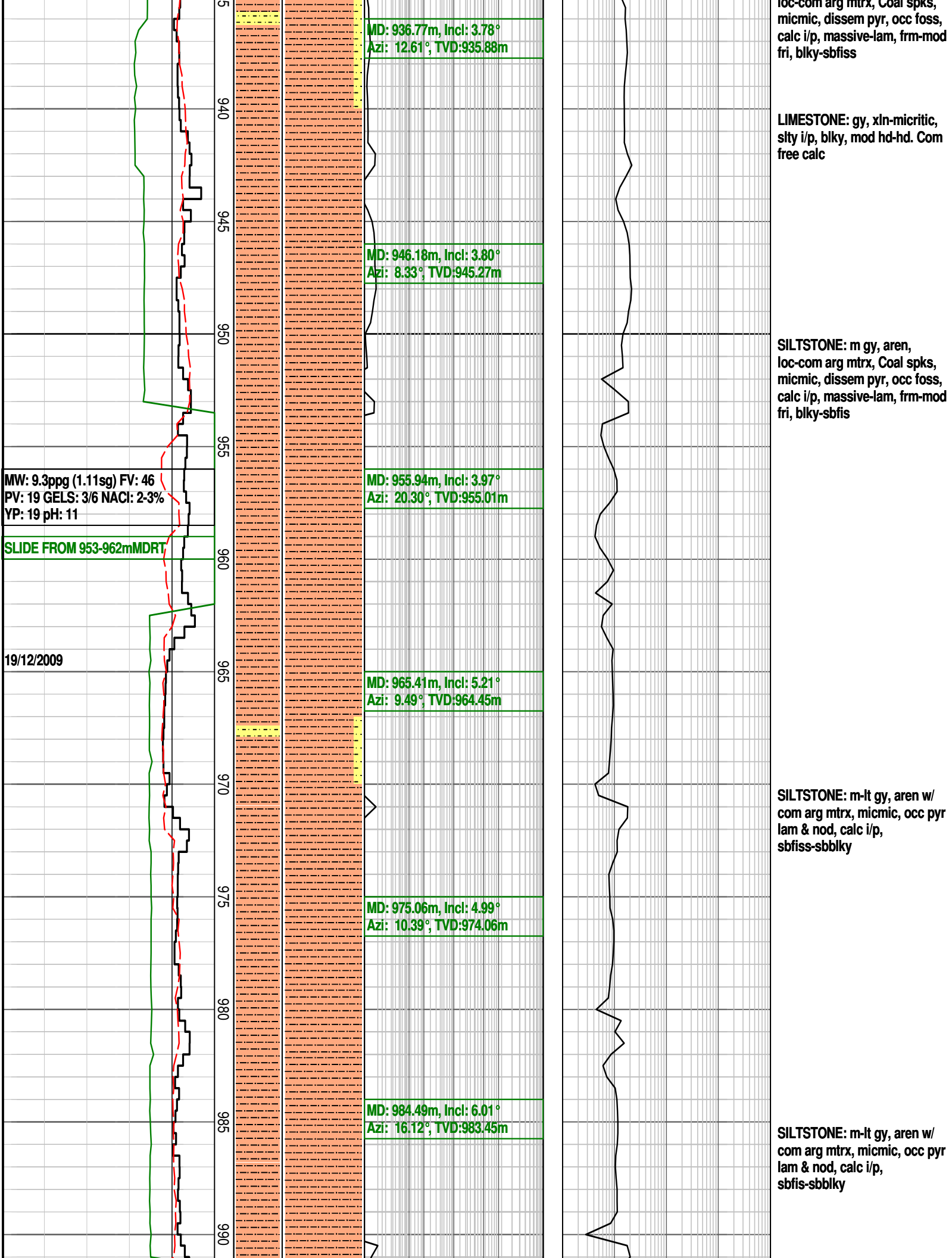
MW: 9.3ppg (1.11sg) FV: 52
PV: 17 GELS: 6/30 NACL: 2-3%
YP: 27 pH: 11

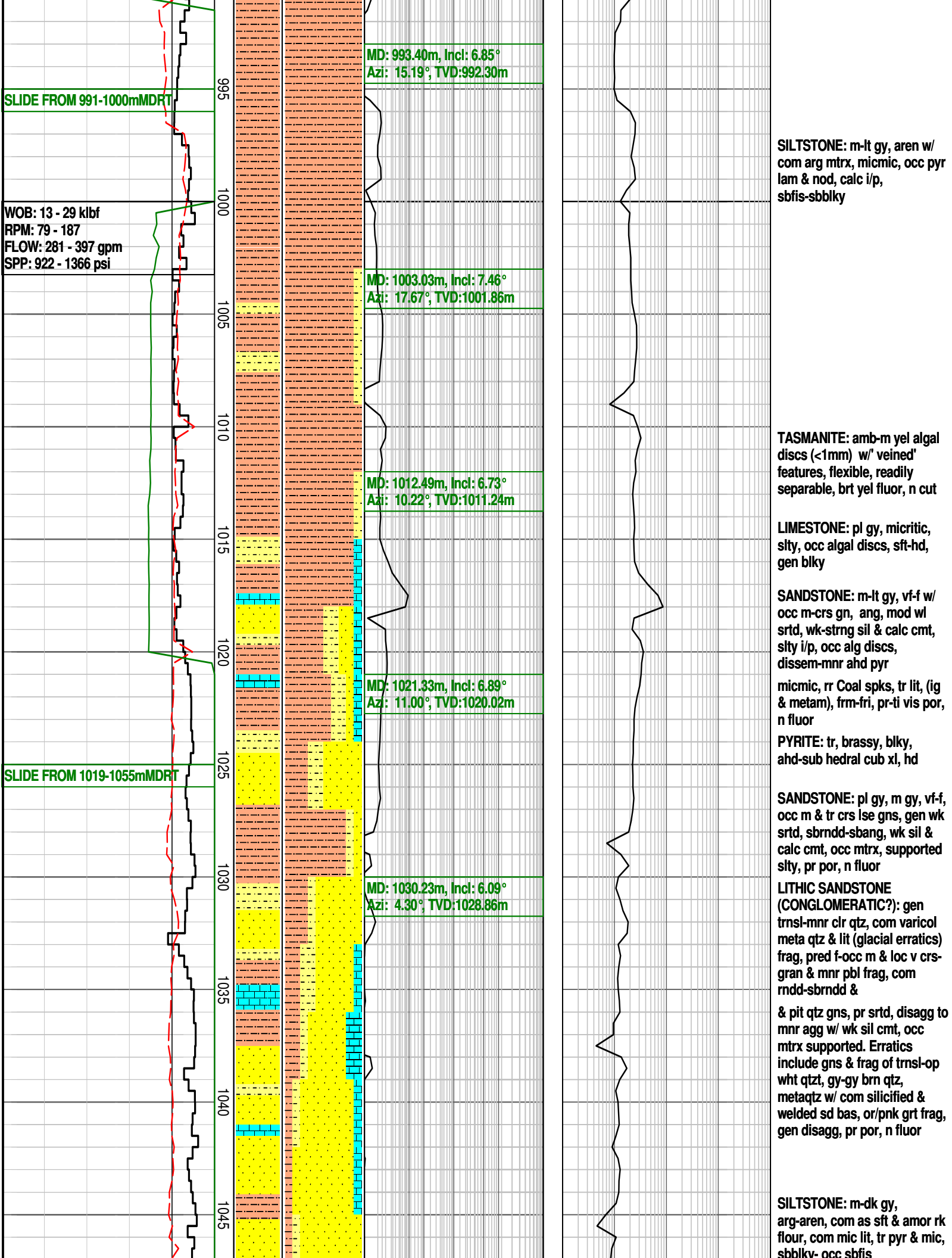
MD: 860.77m, Incl: 3.78°
Azi: 346.55°, TVD:860.31m

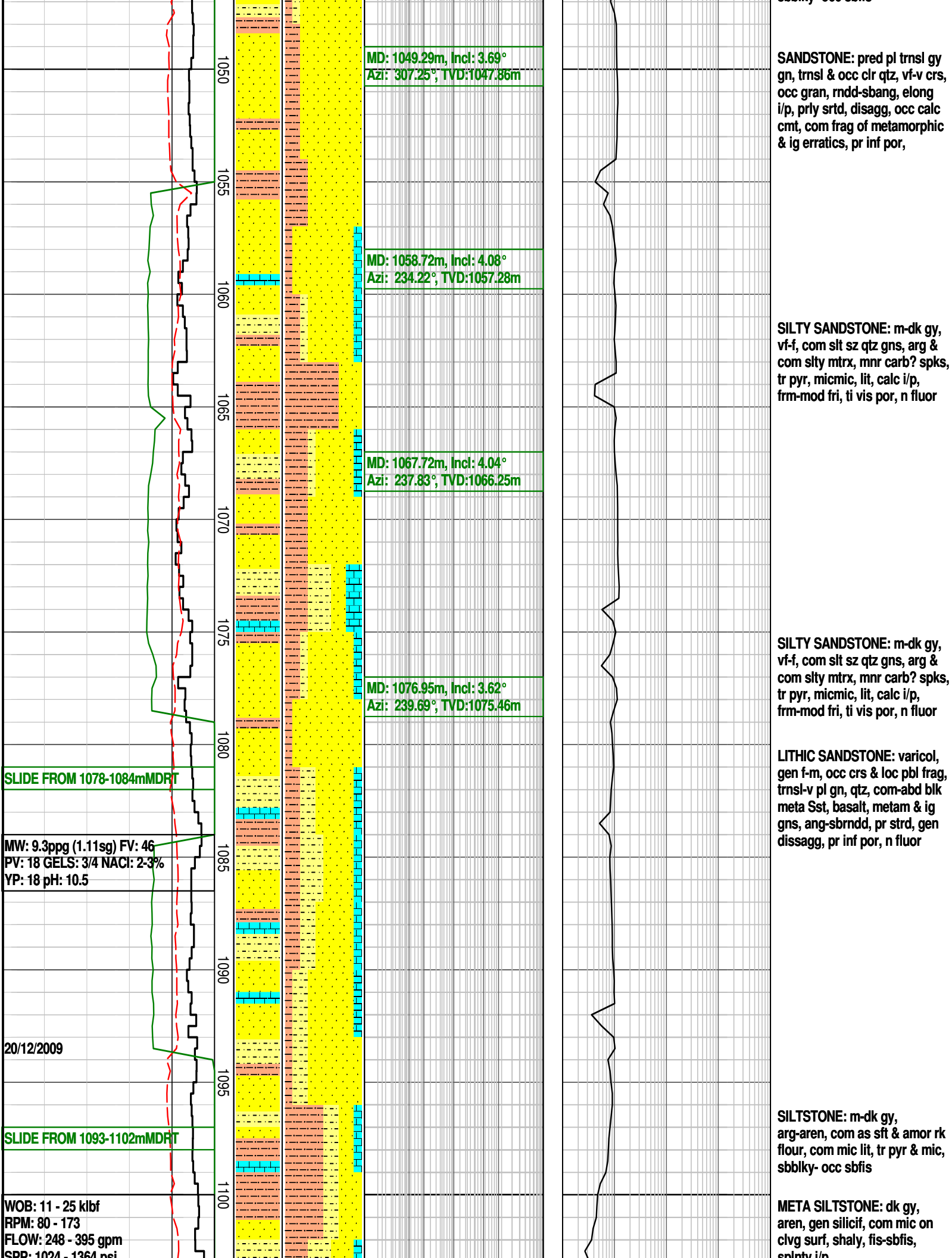
NB7: 216mm (8-1/2")
Smith 5-3-7X
Jets: 3x18
In: 815.0m Out: 1122.0m
Drilled : 307.0m in 49.3 hrs
Grading:
2-2-NO-A-E-X-NO-DMF

MD: 870.33m, Incl: 3.71°
Azi: 357.51°, TVD:869.85m

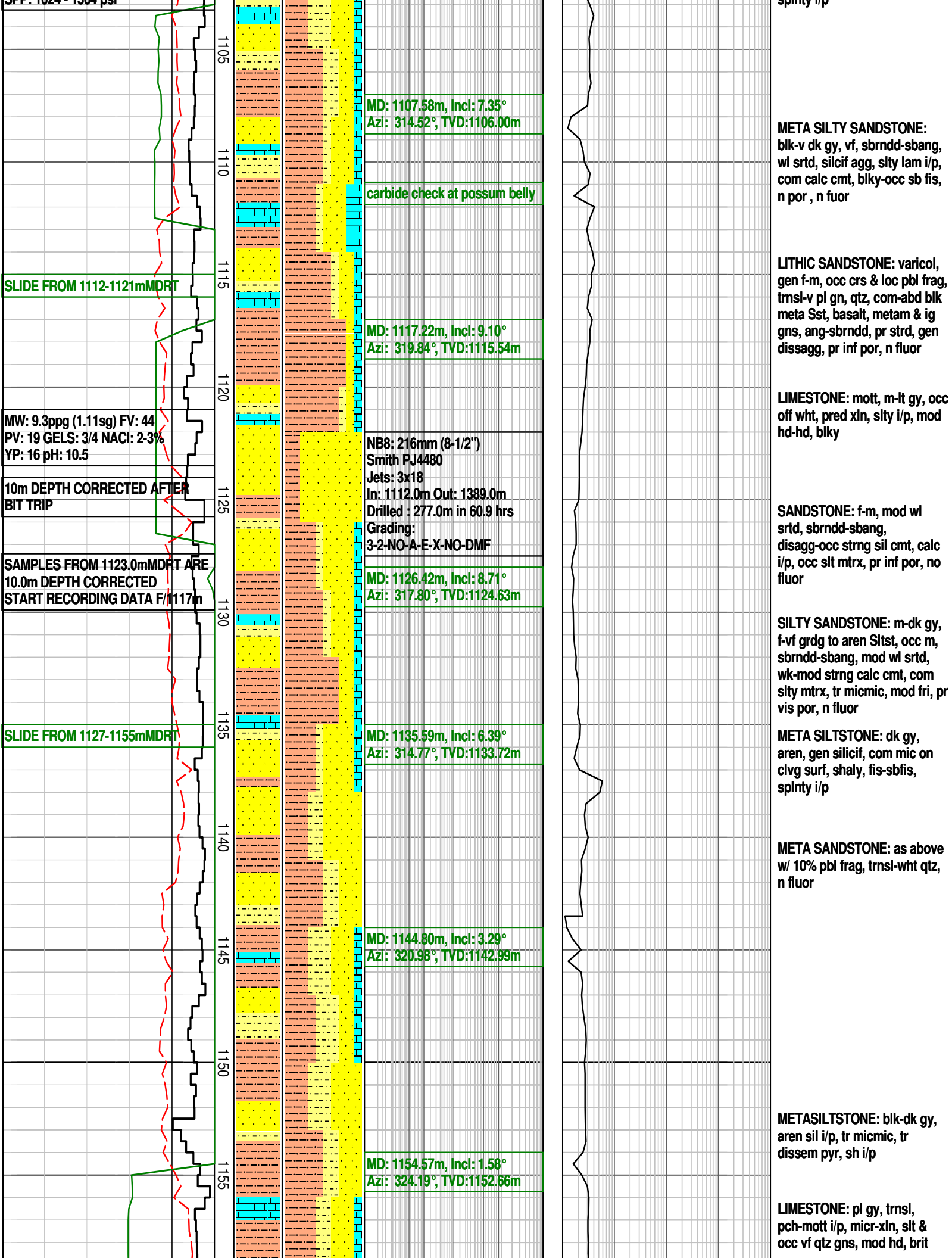








SRP: 11024 - 1104 psi



META SILTY SANDSTONE:
blk-v dk gy, vf, sbrndd-sbang, wl srted, silcif agg, slty lam i/p, com calc cmt, blk-occ sb fis, n por, n fluor

LITHIC SANDSTONE: varicol, gen f-m, occ crs & loc pbl frag, trnsi-v pl gn, qtz, com-abd blk meta Sst, basalt, metam & ig gns, ang-sbrndd, pr strd, gen dissagg, pr inf por, n fluor

LIMESTONE: mott, m-lt gy, occ off wht, pred xln, slty i/p, mod hd-hd, blk

SANDSTONE: f-m, mod wl srted, sbrndd-sbang, disagg-occ strng sil cmt, calc i/p, occ slt mtrx, pr inf por, no fluor

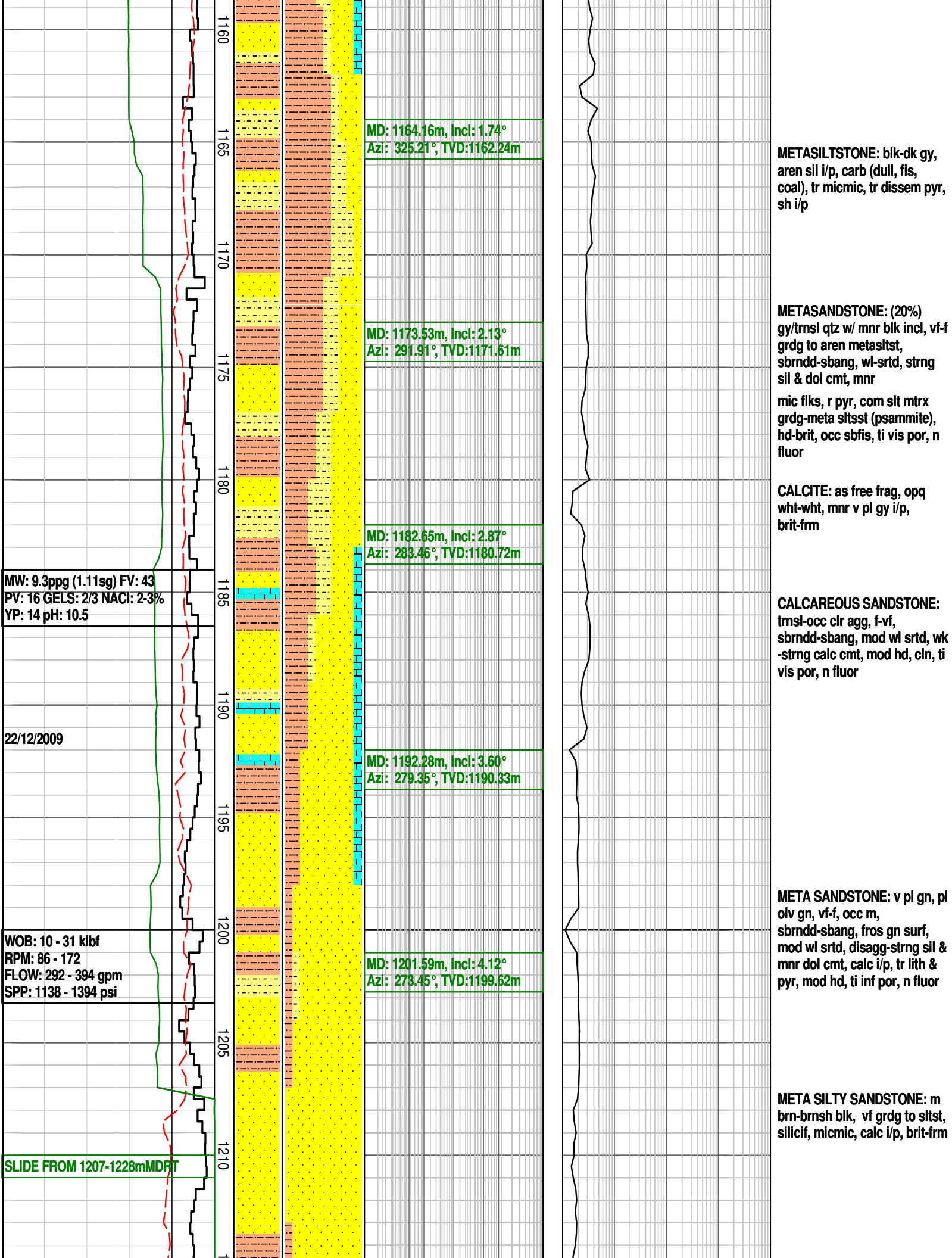
SILTY SANDSTONE: m-dk gy, f-vf grdg to aren Sltst, occ m, sbrndd-sbang, mod wl srted, wk-mod strng calc cmt, com slty mtrx, tr micmic, mod fri, pr vis por, n fluor

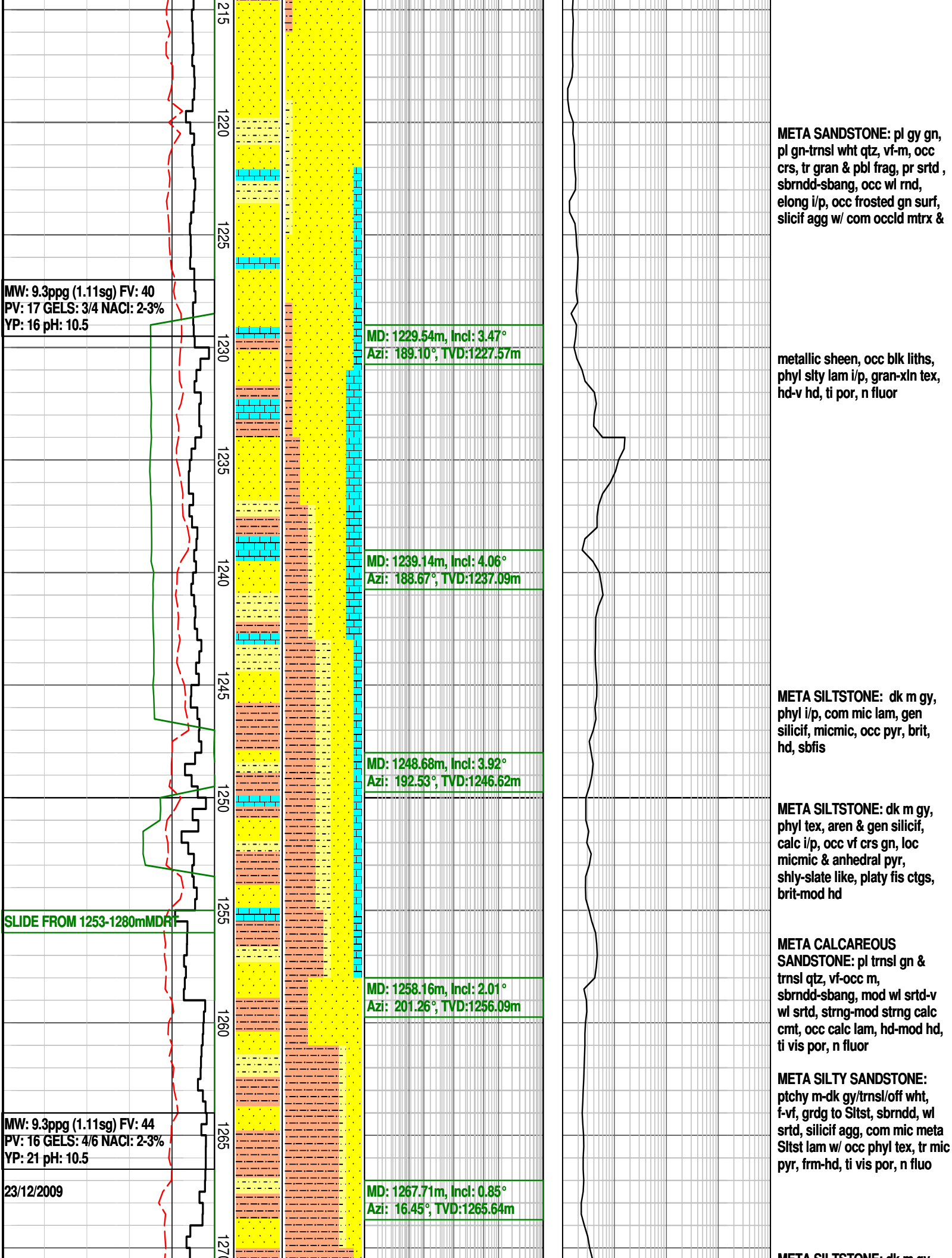
META SILTSTONE: dk gy, aren, gen silcif, com mic on clvg surf, shaly, fis-sbfis, splnty i/p

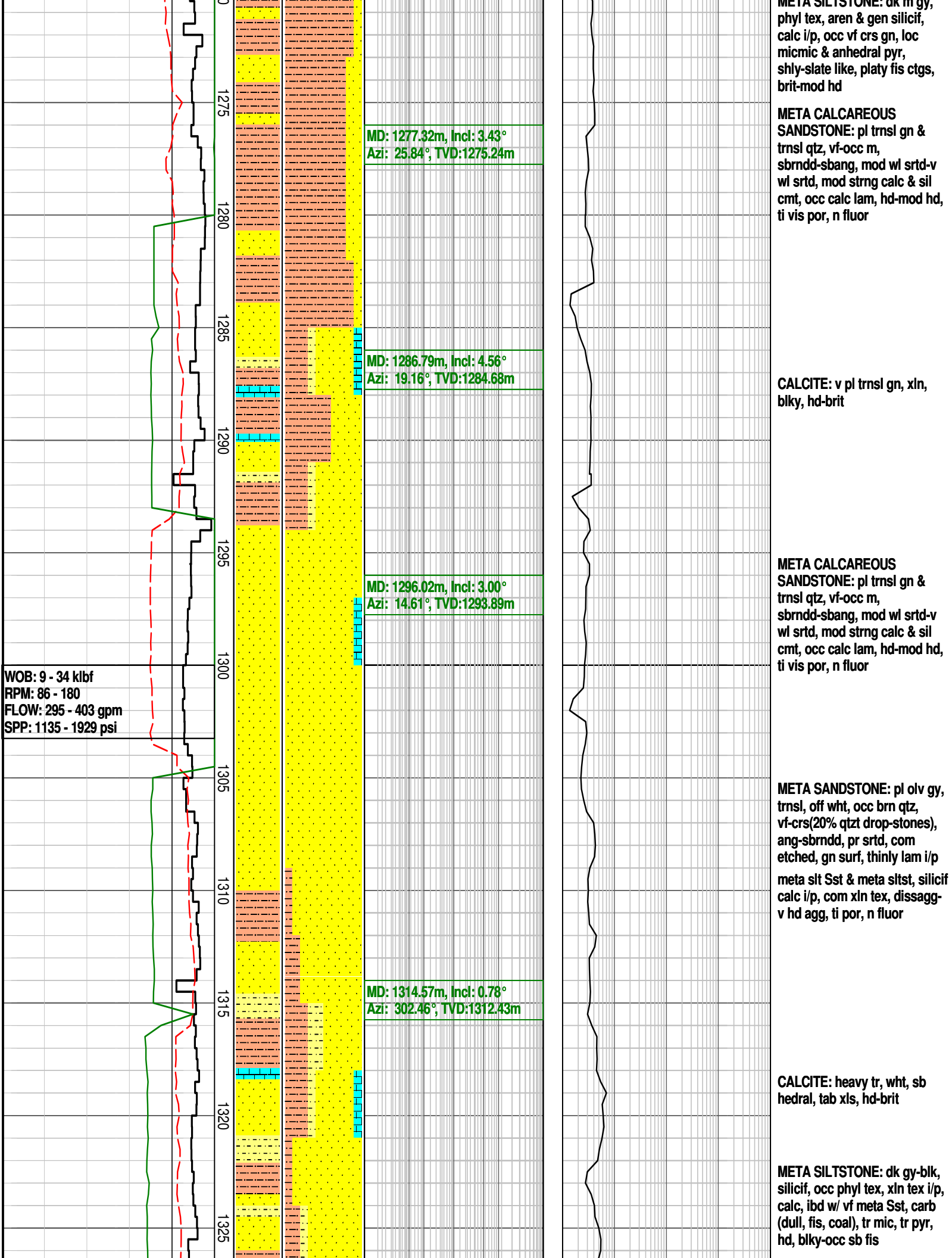
META SANDSTONE: as above w/ 10% pbl frag, trnsi-wht qtz, n fluor

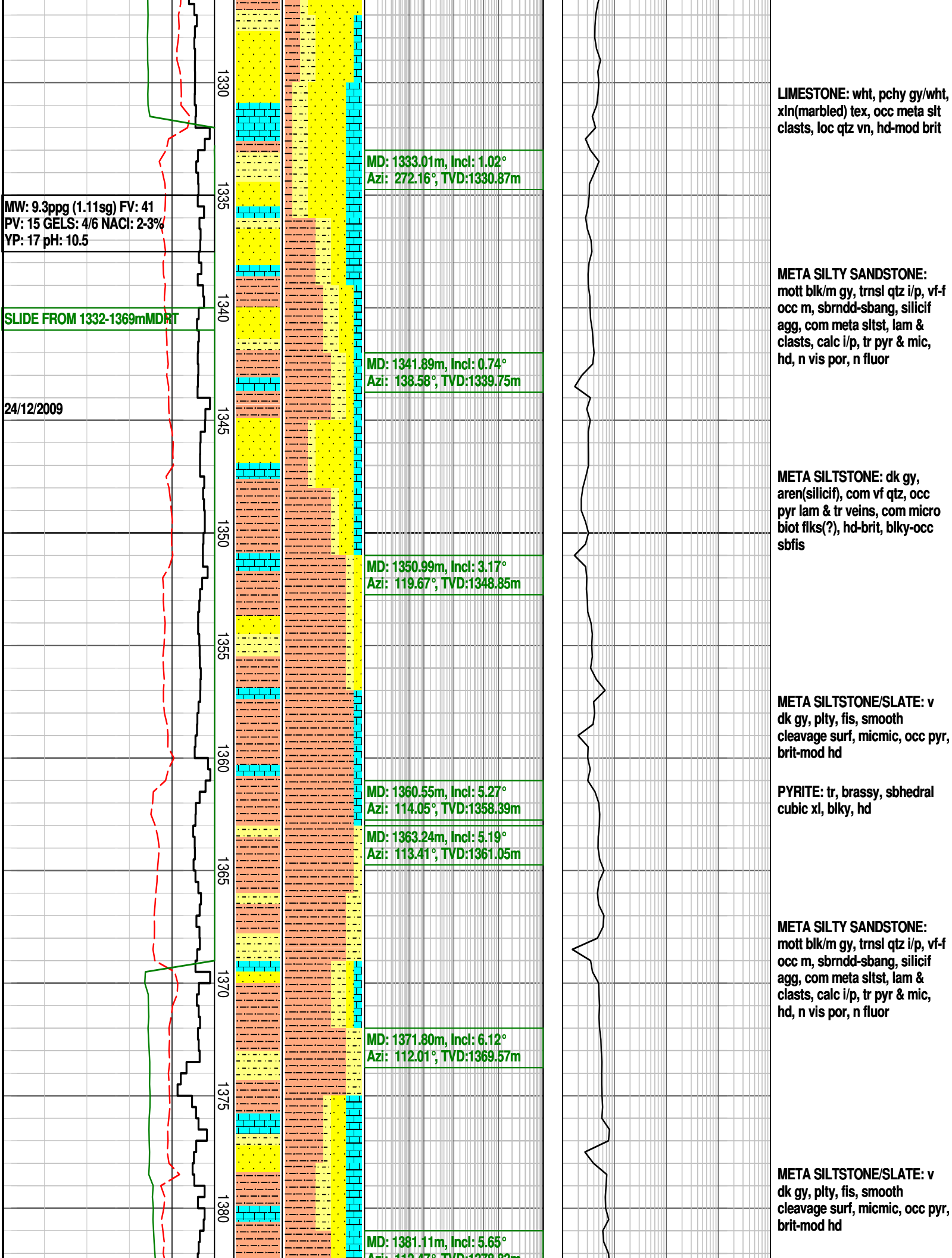
METASILTSTONE: blk-dk gy, aren sil i/p, tr micmic, tr dissem pyr, sh i/p

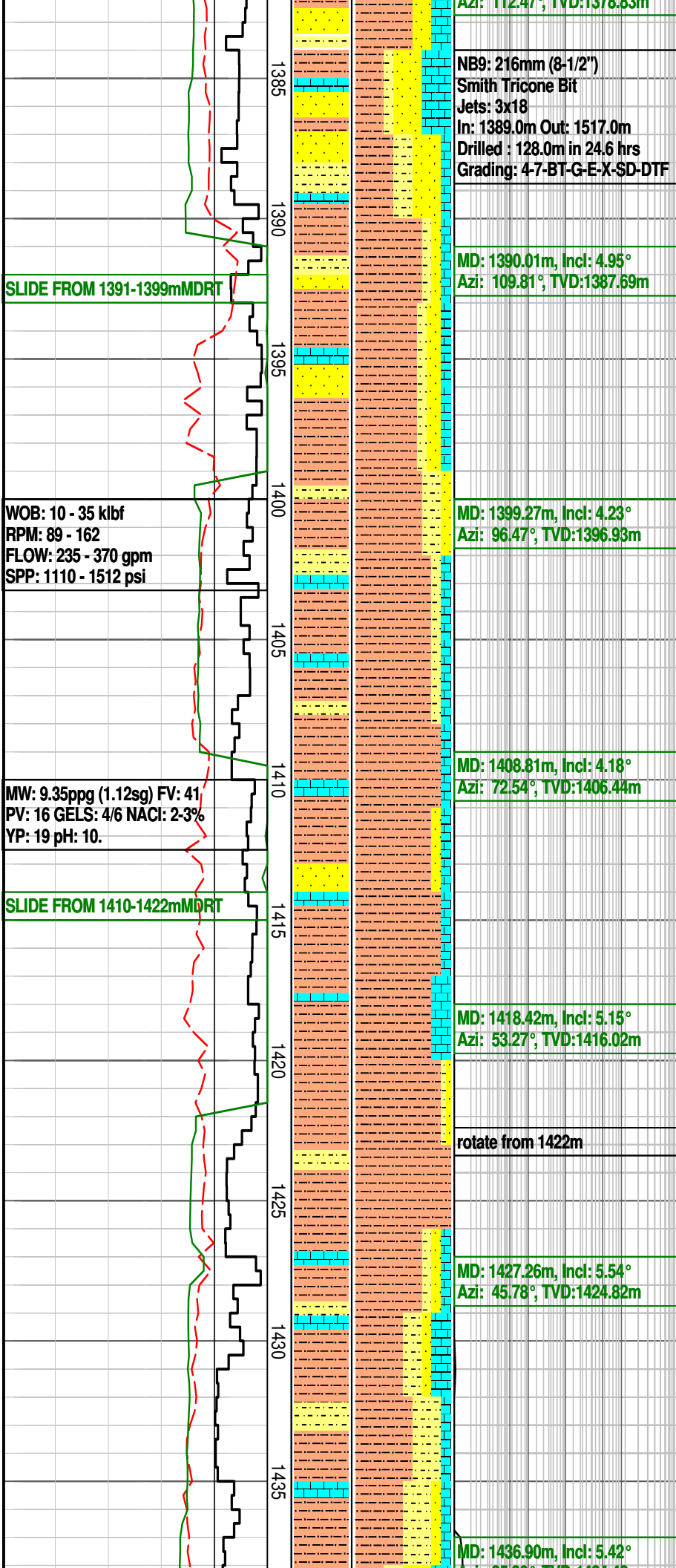
LIMESTONE: pl gy, trnsi, pch-mott i/p, micr-xln, slt & occ vf qtz gns, mod hd, brit











DOLOMITIC SANDSTONE:
mott lt-m gy/blk/trnsl, vf-f, occ
m, sbrn-dd-sbang, v strng dol
cmt, sil i/p, possible Coal (no
gas), micmic i/p, occ mic pyr,
hd-mod hd, ti por, n fluor, grdg

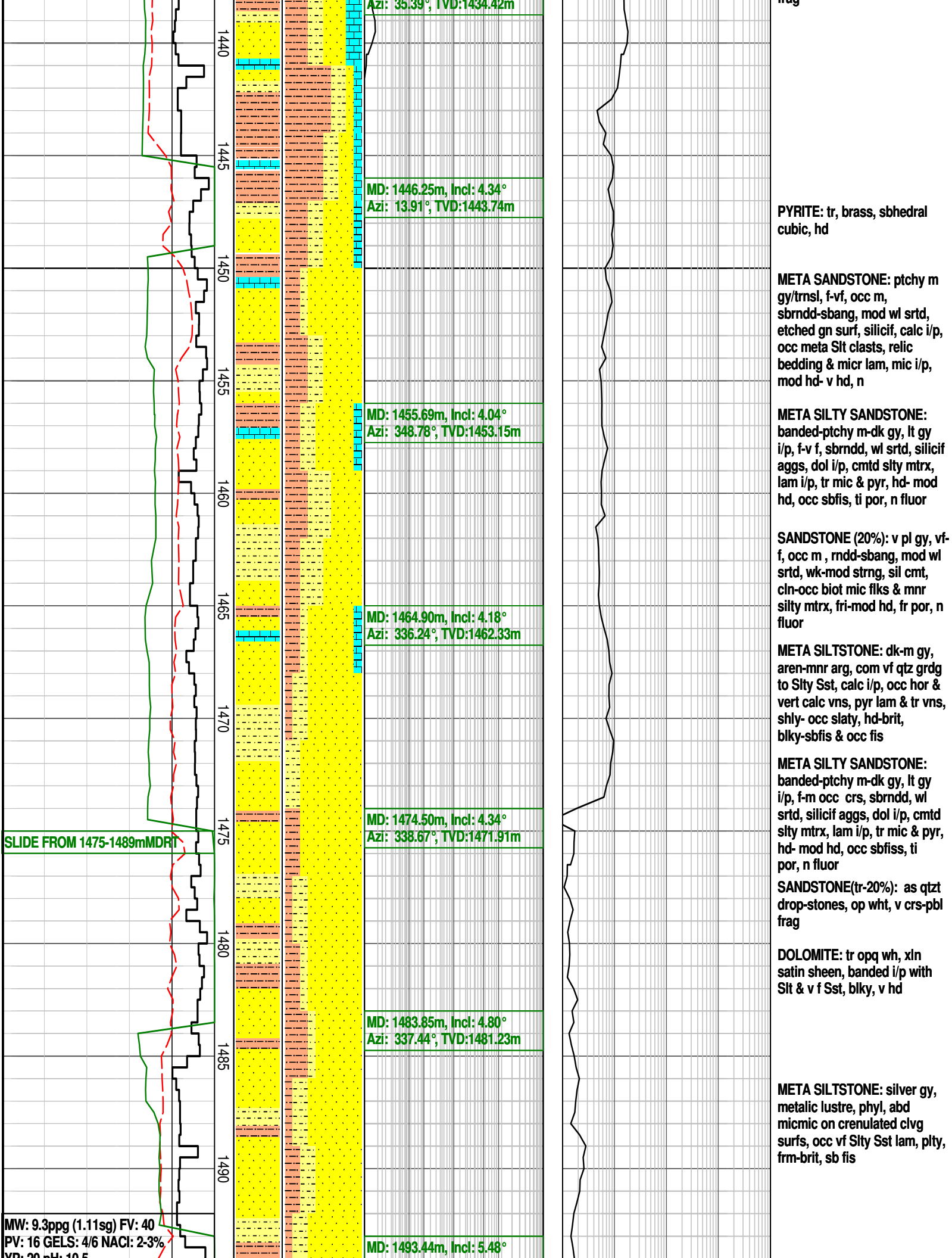
META SILTSTONE: dk-m gy,
aren-mnr arg, com vf qtz grdg
to Sly Sst, calc i/p, occ hor &
vert calc vns, pyr lam & tr vns,
shly- occ slaty, hd-brit,
blky-sbfis & occ fis

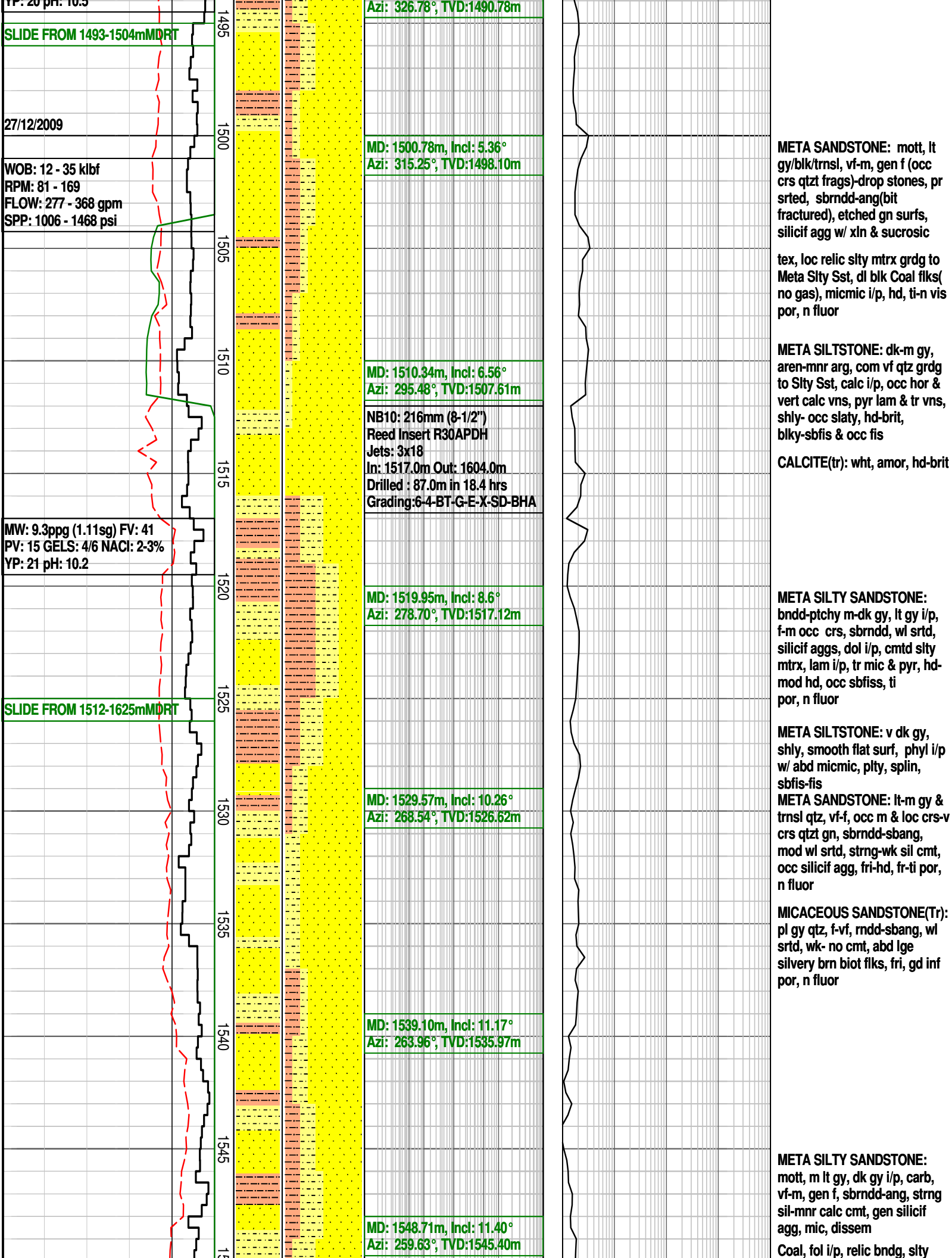
SANDSTONE: tr as qtz
drop-stones, op wht, v crs-pbl
frag

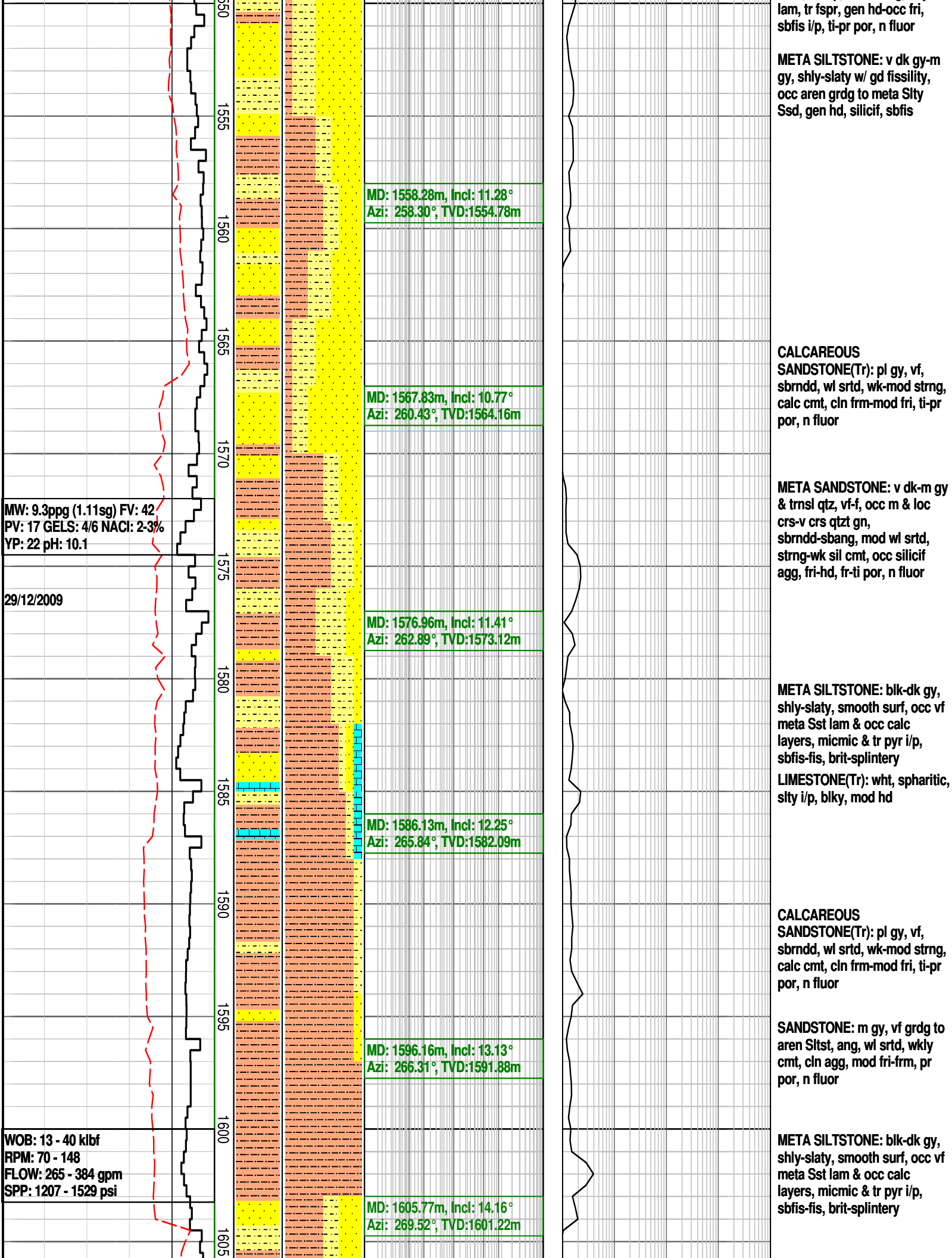
LIMESTONE: wht, pchy gy/wht,
xln(marbled) tex, occ meta slt
clasts, loc qtz vn, hd-mod brit

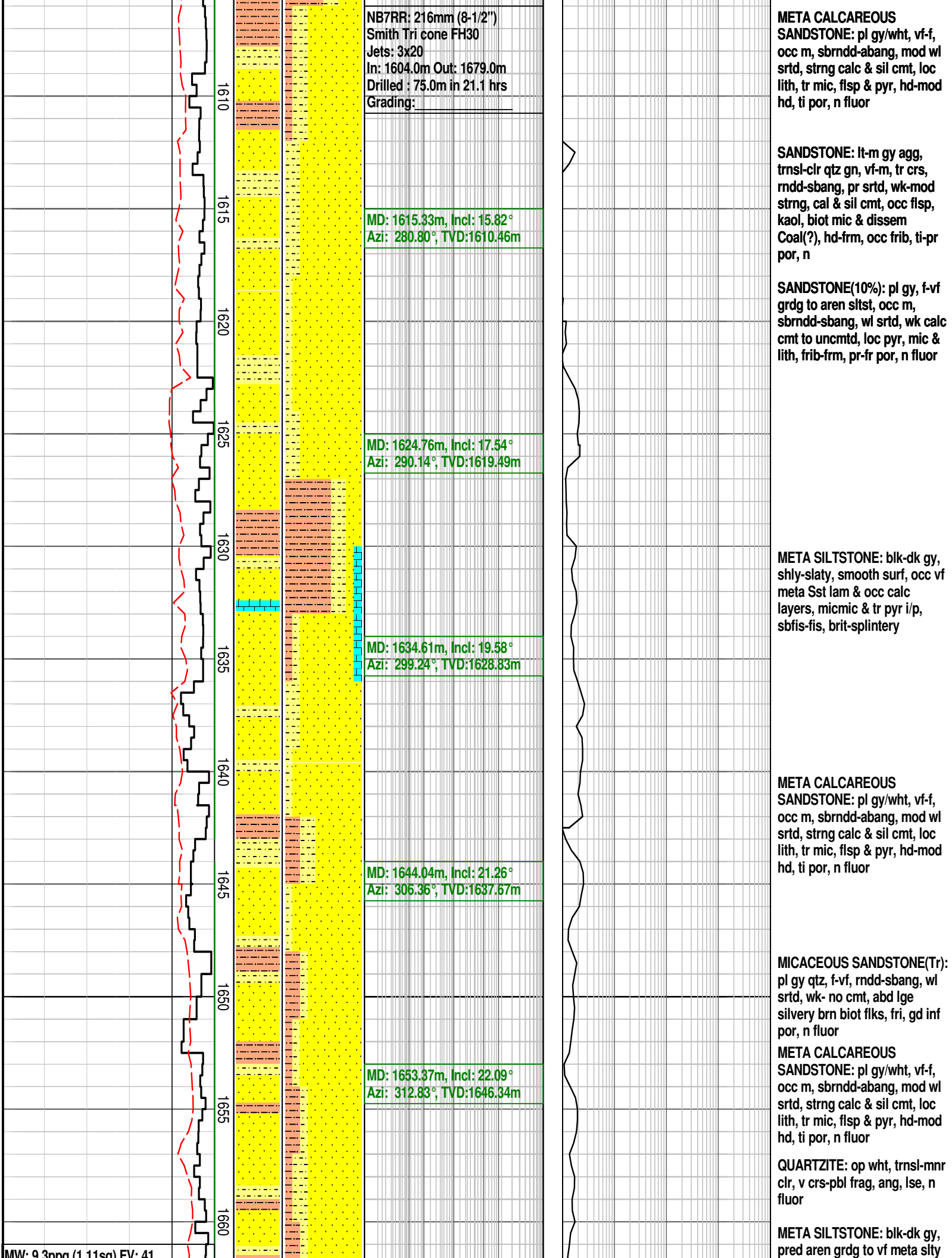
META SILTY SANDSTONE:
mott blk/m gy, trnsl qtz i/p, vf-f
occ m, sbrn-dd-sbang,
silicif-calc agg, com sltst mtrx,
loc sltst lam & clasts, calc i/p,
tr pyr & mic, hd-mod hd, ti-pr
por

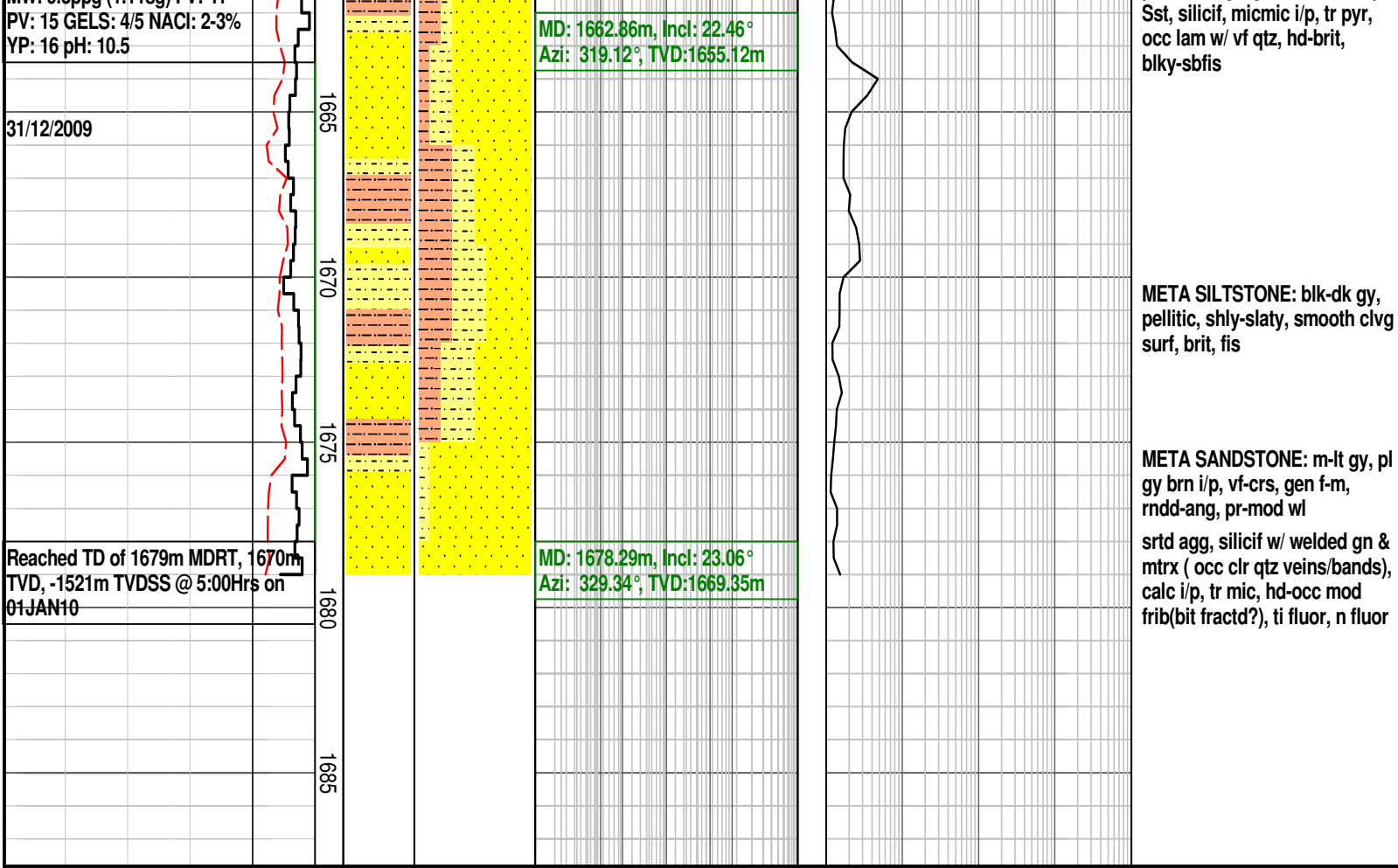
SANDSTONE: tr as qtz
drop-stones, op wht, v crs-pbl
frag











FORMATION EVALUATION LOG

